

Snohomish United White B01

Snohomish Youth SC

Snohomish, WA

B01 total strength=340

attack=0.19 defense=0.21

fall league = NPSL Spr B12D1, RCL B01 Div 4

notes= C team

alt names used:

SNOHOMISH UNITED B01 WHITE C (WA)

SNOHOMISH UNITED WHITE C

Snohomish United B01 White C

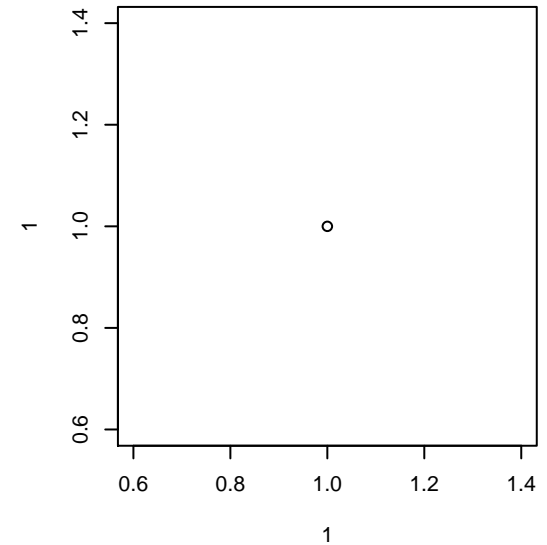
Venues played:

Snohomish United Invit Silver U12

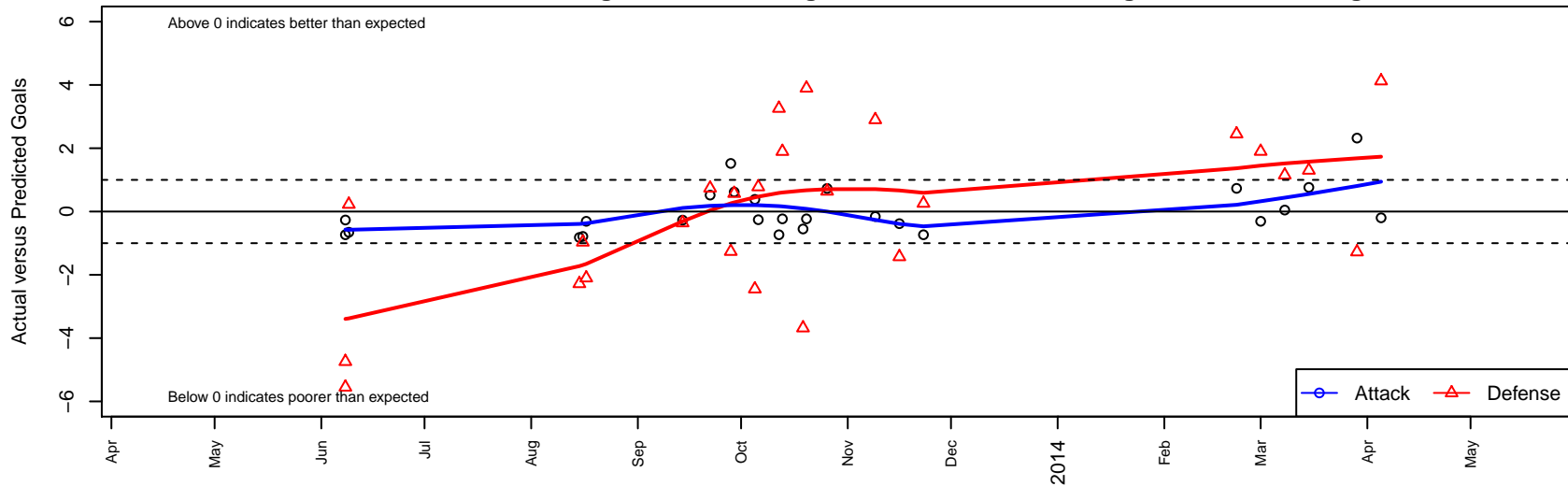
Bigfoot Silver U12

RCL B01 Div 4

NPSL Spr B12D1



Snohomish United White B01
Dots are actual minus expected GF (blue circles) and GA (red triangles).
Blue line is smoothed change in attack strength. Red is smoothed change in defense strength.



	date	home		away		venue	pred.home	pred.away
25639	2014-04-05	Snohomish United White B01	0	Seattle United NE Blue B01	1	NPSL Spr B12D1	0.20	5.13
25445	2014-03-29	Marysville Force B02	2	Snohomish United White B01	4	NPSL Spr B12D1	0.72	1.68
24577	2014-03-15	Snohomish United White B01	1	Crossfire Select Taylor B01	3	NPSL Spr B12D1	0.24	4.30
23901	2014-03-08	Newport FC Supernova B02	1	Snohomish United White B01	1	NPSL Spr B12D1	2.15	0.95
23441	2014-03-01	Snohomish United White B01	0	Seattle United Shoreline Blue B01	2	NPSL Spr B12D1	0.31	3.90
22935	2014-02-22	Mercer Island FC Heat B01	2	Snohomish United White B01	1	NPSL Spr B12D1	4.45	0.27
19115	2013-11-23	Snohomish United White B01	0	Crossfire Premier D B01	3	RCL B01 Div 4	0.73	3.26
18457	2013-11-16	Snohomish United White B01	0	Harbor Premier Green B01	5	RCL B01 Div 4	0.38	3.57
17724	2013-11-09	Snohomish United White B01	0	SSC Shadow B B01	2	RCL B01 Div 4	0.16	4.90
15857	2013-10-26	Eastside FC Grey B01	3	Snohomish United White B01	1	RCL B01 Div 4	3.64	0.27
15305	2013-10-20	Snohomish United White B01	0	3 Rivers Black B01	4	RCL B01 Div 4	0.23	7.90
14930	2013-10-19	Eastside FC Blue B01	6	Snohomish United White B01	0	RCL B01 Div 4	2.32	0.55
14331	2013-10-13	3 Rivers Black B01	6	Snohomish United White B01	0	RCL B01 Div 4	7.90	0.23
13875	2013-10-12	Crossfire Premier D B01	0	Snohomish United White B01	0	RCL B01 Div 4	3.26	0.73
13290	2013-10-06	Snohomish United White B01	0	PacNW White B01	5	RCL B01 Div 4	0.26	5.78
12852	2013-10-05	Slammers White B01	4	Snohomish United White B01	1	RCL B01 Div 4	1.55	0.62
12328	2013-09-29	Harbor Premier Green B01	3	Snohomish United White B01	1	RCL B01 Div 4	3.57	0.38
11916	2013-09-28	FWFC White B01	3	Snohomish United White B01	2	RCL B01 Div 4	1.74	0.48
11394	2013-09-22	Snohomish United White B01	1	FWFC White B01	1	RCL B01 Div 4	0.48	1.74
9991	2013-09-14	Snohomish United White B01	0	Eastside FC Grey B01	4	RCL B01 Div 4	0.27	3.64
7008	2013-08-17	Seattle United Shoreline Blue B01	6	Snohomish United White B01	0	Bigfoot Silver U12	3.90	0.31
6769	2013-08-16	Snohomish United White B01	0	WPFC Fury Black B01	4	Bigfoot Silver U12	0.79	3.03
6671	2013-08-15	RSA Elite White B01	4	Snohomish United White B01	0	Bigfoot Silver U12	1.72	0.82
802	2013-06-09	Mukilteo Strikers B01	5	Snohomish United White B01	0	Snohomish United Invit Silver U12	5.23	0.66
733	2013-06-08	Crossfire Premier D B01	8	Snohomish United White B01	0	Snohomish United Invit Silver U12	3.26	0.73
735	2013-06-08	Mercer Island FC Heat B01	10	Snohomish United White B01	0	Snohomish United Invit Silver U12	4.45	0.27